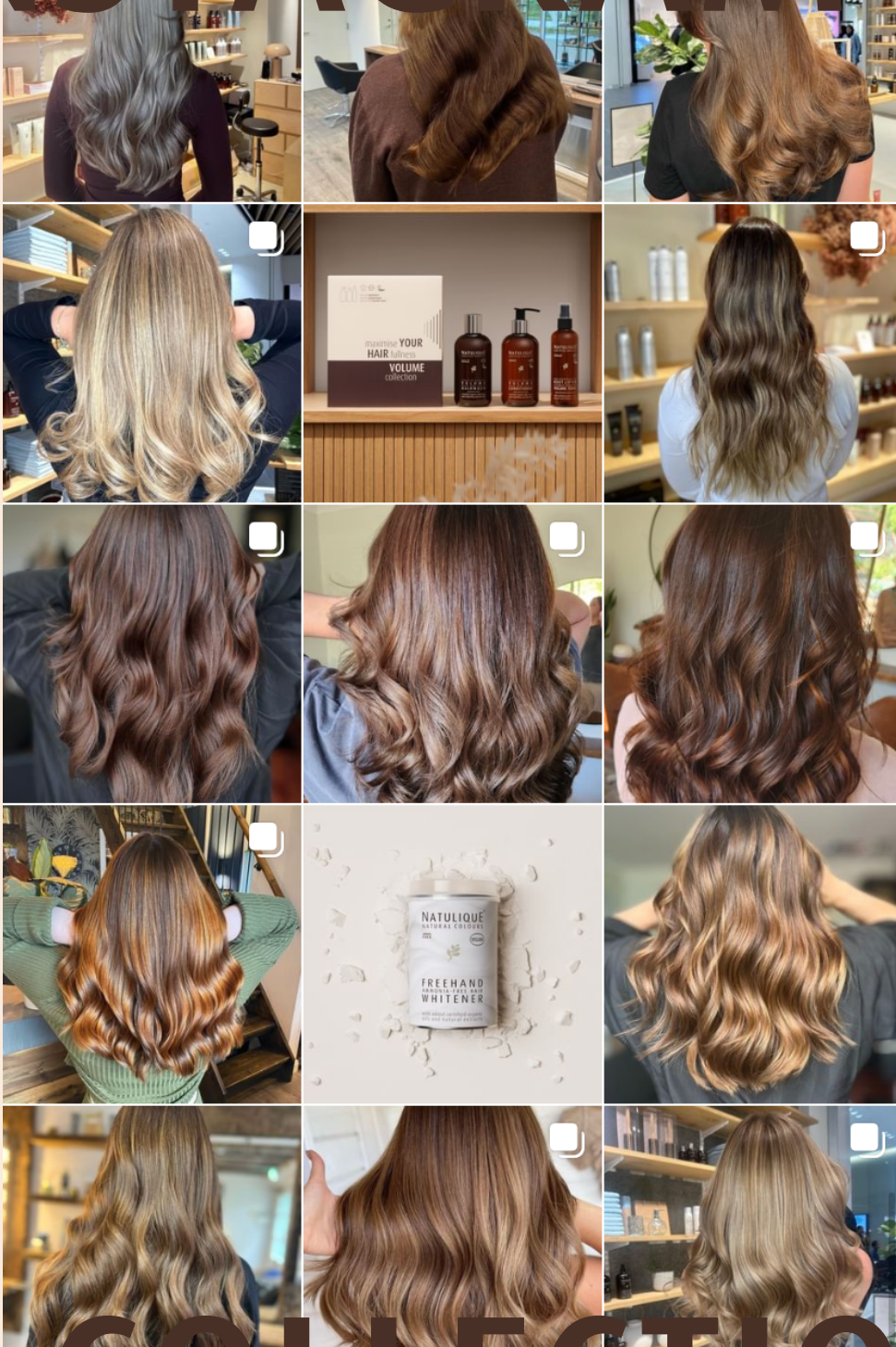


NATULIQUE®  
CERTIFIED ORGANIC BEAUTY

# INSTAGRAM



# COLLECTION

INSPIRATION FOR COLOUR RECIPES

**Please note:** The formulations in this book are intended as a guide. Actual results may vary due to individual hair characteristics, including but not limited to porosity, texture, underlying pigments, and previous colour history. Your professional assessment and adjustments are necessary for optimal colour results.



**NATULIQUE**<sup>®</sup>

CERTIFIED ORGANIC BEAUTY

**Website**

[www.NATULIQUE.com](http://www.NATULIQUE.com)

**Socials**

@NATULIQUE

**Email**

[Soren@NATULIQUE.com](mailto:Soren@NATULIQUE.com)

# DARK BROWN





## Dark beige brown

Roots: 5.2 + 5.17 with 6%

Mid: 9.2 + 5.2 with 6%

Lengths: 5.2 + 0.81 with 3%



by @heyday.salon

## Cool brown

Roots: 20g 5.0 + 30g 7.2 with 3% 1:1

Lengths: 20g 5.0 + 30g 7.2 with 3% 1:2

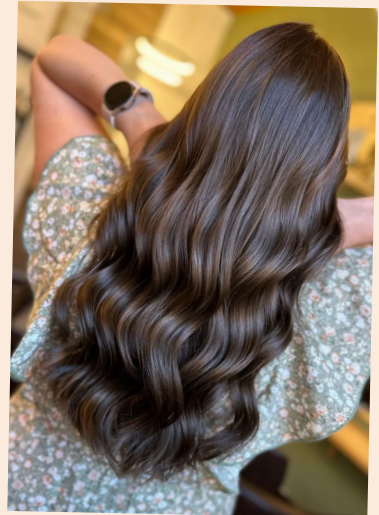


by @mathildet.pii

## Dark vibrant brown

Roots: 1/2 7.2 + 1/2 5.2 + 1-2 cm DOUCE Blueberry

Lengths: 1/2 7.2 + 1/2 5.2 + 3-4 cm DOUCE Blueberry



by @mdcoiffure\_mathildeduthy



# BROWN



## Beige brown

Highlights with Whitener with 3%

10g 8.2 + 10g 11.81 + 1g 1.8 + 5g of 3% + 20g Colour Shield Hairwash + 40g lukewarm water (15 min)

Then coloured with:

50g 7.17 + 50g 7.2 + 5g 1.8 with 3% (1:2)



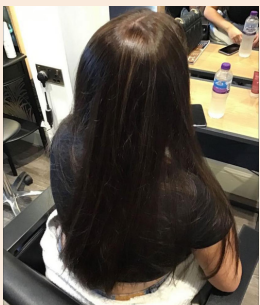
by @mcouturestudio81

## Cold balayage brown

Balayage with Whitener + 9%

Toner lengths: 20g 5.2 + 10g 7.2 with 1.5%

Toner roots: 15g 10.3 + 15g 9.2 + 5g 8.2 with 1.5%



by @jonalchemy

## Beige balayage brown

Balayage:

Roots: Whitener with 6%

Lengths: Whitener with 3%

Toner: 20g 9.0 + 30g 8.0 + 10g 9.07 + 10g 0.11 with 1.5% (1:1)



by @mathildet.pii



## Hazelnut brown

Roots: 30g 7.0 + 30g 7.2 + 3cm 5.2 + 2cm Lychee with 60g 4.5% (40 min)

Lengths: 30g 9.2 + 10g 7.0 + 1.5cm 5.2 + Lychee with 60g 1.5% (20 min)



by @salon\_katerinanovosadova

## Pre-filled golden brown

7.0 + 1.5% on the ends and Whitener and 9% balayage weaves.

Toner: 8.3 and 9.2 with 1.5% (1:2)



by @jonalchemy

## Copper brown

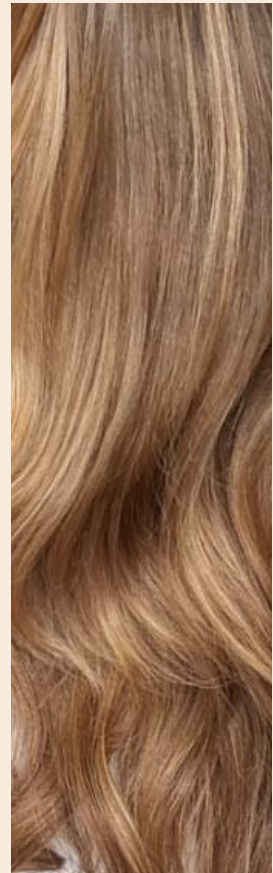
All over colour with 6.6 with 1.5% (1:1)



by @primroseorganichairstudio



# BLONDE



## Light golden brown

Balayage with Whitener with 6%  
Shadow root with 2 parts 6.0 and 1 part 5.2  
Toner on the lengths and ends alternated between:  
1. 9.07 + 9.03 + a little bit of 8.2 with 1.5 %  
2. 6.07 + 6.3 + 7.0 with 1.5%



by @oasehairstudio

## Dark beige blondeage

Balayage:  
Roots: + 3%  
Lengths: + 6%  
Toner: 10.8 + 8.0 + 9.2 + 8.2 with 1.5% (1:2)



by @mathildet.pii

## Light golden brown

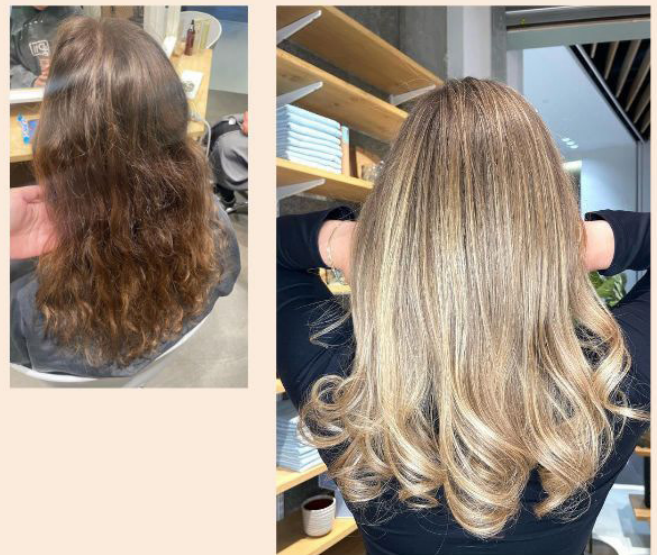
Highlights with Whitener with 6%  
Toner: 10.3 with 1.5 %



by @jonalchemy

## Balayage blonde

Balayage Whitener with 3% (1:2)  
Toner: 30g 9.07 + 20g 9.0 + 6g 10.3 with 1.5% (1:2)  
Treatment was completed with BioActive Bond Repair system



by @emilie.pii



# LIGHT BLONDE





## Golden blonde

Foils alt: 9.3 + 9% (1:1) and 11.0 with 12% (1:2)  
and Whitener with 12% (1:2)  
Toner: 8.3 and 8.07 with 1.5% (1:2)



by @hairbyellarae

## Balayage blonde

Whitener with 6% (1:2)  
Toner: Equal parts 10.8 + 9.07 + 8.0  
with 1.5% (1:2)



by @mathildet.pii

## Cold blonde

Mix of balayage and babylights  
Whitener with 6%  
Toner: 10.0 + 10.8 with 3% (1:2)



by @salonsaxkjaer

## Beige blonde:

Roots: 25g 7.2 + 25g 8.17 + 1 g 6.44 + 50g  
with 3%  
Lengths: 15g 11.0 + 15g 9.2 + 0,3g 6.44 + 45g  
with 1.5%



by @salon\_katerinanovosadova

# COPPER RED





## Copper red:

Roots (comb through): 6.43 + 7.43 + 8.66 + 0.66  
with 9% (1:1)  
Leghts: 7.43 + 7.66 + 8.66 + 0.66  
with 6% (1:1)



by @lkb\_thelowtoxsalon

## Warm red:

Lightened with Whitener + 6%  
Toned on rough-dried hair with:  
7.43 + 7.66 with 1.5% (1:2)



by @lauraatalchemy

## Balayage red:

Pre-pigmented with Intense Copper Refresher.  
Wash out and colored with:  
Equal parts 6.43 + 7.43 with 3% (1:2)



by @oline.pii



## Golden copper red

Roots: 3/4 7.43 + 1/8 6.43 + 1/8 7.66 + 3cm 0.66 + 3cm 7.0 with 9% (1:1)

Lengths: 7.66 + 7.43 + 5 cm 0.66 with 1.5% (1:2)

Leave on the copper refresher for 5 min. at the basin!  
And you have copper magic.



by @lkb\_thelowtoxalon

## Intense copper red

Roots: 20g 7.43 + 5g 6.43 + 5g 7.66 + 5g 0.66 + 5g 7.0 with 6% (1:1)

Lengths: 10g 7.66 + 10g 7.43 + 10g 0.66 with 3% (1:1)



by @figolant

## Thank you for reading this book.

And thank you to all who shared the wonderful transformation with us to create this cookbook.

Big thanks to

All the girls at [@figolant](#)  
Lauren [@lkb thelowtoxsalon](#)  
Mathilde at M.D. Coiffure [@mdcoiffure mathildeduthy](#)  
Mathilde from Pii [@mathildet.pii](#)  
Oline from Pii [@oline.pii](#)  
Emilie from Pii [@emilie.pii](#)  
Heyday Organic Salon [@heyday.salon](#)  
May [@mcouturestudio81](#)  
Jon from Alchemy [@jonalchemy](#)  
Laura from Alchemy [@lauraatalchemy](#)  
Katerina [@salon katerinanovosadova](#)  
Sille [@primroseorganichairstudio](#)  
Judith [@oasehairstudio](#)  
Ella from Ruby B [@hairbyellarae](#)  
Salon Saxkjaer [@salonsaxkjaer](#)

Make sure to share your formulations and transformation and tag us using [@NATULIQUE](#) and [#NATULIQUE](#)



**NATULIQUE**<sup>®</sup>  
CERTIFIED ORGANIC BEAUTY